

Marcel Duchamp in South-East Asia

Curated by Tony Godfrey

on behalf of the Centre for Cultural Anxiety

15 September–21 October 2012

Equator Art Projects is pleased to present *Marcel Duchamp in South-East Asia*, an exhibition in the gallery's new space at Gillman Barracks, featuring 43 artists from Indonesia, Singapore, the Philippines, Malaysia, Iran, and England.

Curated by Tony Godfrey, the Director of Exhibitions at Equator Art Projects, artists in this show were invited to exhibit works that in some ways reflect on or respond to the work or legacy of the French artist Marcel Duchamp, who is often referred to as "the father of conceptual art", and was the most influential artist of the last one hundred years in the West. Has he also been the most influential artist in South-East Asia?

Participating artists will present works across a broad spectrum of media, including paintings, drawings, sculptures, music, videos, texts, photographs, installations and assorted odd things. They include: Nindityo Adipurnomo (Indonesia), Poklong Anading (Philippines), Arahmaiani (Indonesia), Felix Bacolor (Philippines), Lyle Buencamino (Philippines), Ringo Bunoan (Philippines), Annie Cabigting (Philippines), Heman Chong (Singapore), Genevieve Chua (Singapore), Lena Cobangbang (Philippines), Heri Dono (Indonesia), Arin Dwihartanto (Indonesia), F.X. Harsono (Indonesia), Amanda Heng (Singapore), Ho Tzu Nyen (Singapore), Indieguerillas (Indonesia), Mella Jaarsma (Indonesia), Geraldine Javier (Philippines), Michael Lee (Singapore), Isa Lorenzo (Philippines), Nikki Luna (Philippines), Jeremy Millar (England), Wiyoga Muhandanto (Indonesia), Donna Ong (Singapore), Gary-Ross Pastrana (Philippines), Leila Pazooki (Iran), Yuli Prayitno (Indonesia), Milenko Prvacki (Singapore), Uji "Hahan" Handoko Eko Saputro (Indonesia), Filippo Sciascia (Indonesia), Jeremy Sharma (Singapore), Agus Suwage (Indonesia), Tan Guo Liang (Singapore), Maria Taniguchi (Philippines), S Teddy D (Indonesia), Titarubi (Indonesia), Wire Tuazon (Philippines), Bambang "Toko" Witjaksono (Indonesia), Ian Woo (Singapore), Stuart Pearson Wright (England), Tintin Wulia (Indonesia), Yee I-Lann (Malaysia), and Zhao Renhui (Singapore).

EQUATOR ARTPROJECTS

Catalogue

The presentation of *Marcel Duchamp in South-East Asia* will feature a catalogue, which includes essays by Ringo Bunoan, Gao Yi Yuan, Tony Godfrey, Agung Hujatnikajennong, Jeremy Millar, Lee Weng Choy and Adele Tan. The catalogue will be available at Equator Art Projects. Price to be advised.

Education and Public Programs

Marcel Duchamp in South-East Asia will be accompanied by a series of discussions co-hosted by Yellow River Arts Centre (YRAC) S-Base, in which artists and critics will respond to the question: “*What happened when Marcel Duchamp came to South-East Asia*”.

Duchamp in Indonesia

Speakers include Arahmaiani, Indieguerillas, and Filippo Sciascia.

Sunday, 16th September at 11AM – 12.30PM

Venue: YRAC S-base, 7 Lock Road, Gillman Barracks

Who was Marcel Duchamp? Did he really come to Singapore?

Lecture by Tony Godfrey.

Friday, 21st September at 7PM – 8.30PM

Venue: YRAC S-base, 7 Lock Road, Gillman Barracks

Duchamp in Singapore

Speakers include Ho Tzu Nyen, Amanda Heng, and Tan Guo Liang.

Friday, 28th September at 7PM – 8.30PM

Venue: YRAC S-base, 7 Lock Road, Gillman Barracks

Duchamp in the Philippines

Speakers include Ringo Bunoan and Joyce Toh.

Friday, 5th October at 7PM – 8.30PM

Venue: YRAC S-base, 7 Lock Road, Gillman Barracks

Duchamp in Asian Art History

Speakers include Adele Tan, Lee Weng Choy and Dr. Charles Merewether.

Friday, 12th October at 7PM – 8.30PM

Venue: YRAC S-base, 7 Lock Road, Gillman Barracks

EQUATOR ARTPROJECTS

About Equator Art Projects

The newly established Equator Art Projects is a sister gallery to one of the top Indonesian galleries – Langgeng Art Gallery. Equator Art Projects represents a core group of acclaimed Indonesian artists, and exhibits works of artists from the region, especially Singapore and the Philippines. Equator Art Projects aims to be a platform for art that is intelligent, sensuous, and “of-this-moment” — be it painting, sculpture or of a conceptual heritage. It also aims to contribute to the study of Southeast Asian art history through its exhibitions and publications.

About Gillman Barracks

Gillman Barracks (GB) is Asia’s up-and-coming destination for contemporary art. It will be distinguished as a vibrant centre in Asia for the creation, exhibition and discussion of contemporary art. Named after British general Sir Webb Gillman, GB is set amid lush greenery and was once a stronghold to the First Battalion of the Middlesex Regiment. The conserved colonial barracks will house galleries and creative businesses, as well as the Centre for Contemporary Art (CCA) Singapore. The international galleries will feature diverse and ever-changing contemporary art exhibitions, while CCA Singapore will bolster the region’s visual arts landscape through its international artist residency, research and exhibition programmes. By fostering cultural exchange and creation, showcasing the best and most innovative art of our times, as well as generating discourse and research, CCA Singapore will establish Singapore as an important centre for contemporary art in Asia. Gillman Barracks will be officially launched on 14 September 2012, and will only open to public from 15 September 2012. The Centre for Contemporary Art (CCA) Singapore will open in 2013. More information on Gillman Barracks can be found at www.gillmanbarracks.com.

The Opening of Gillman Barracks

Eleven galleries other than Equator Art Projects will open on Friday, 14 September 2012. There will be sixteen special artists projects on-site, including three projects by artists represented by Equator Art Projects: Indieguerillas, Donna Ong and Filippo Sciascia.

EQUATOR ARTPROJECTS

EVENT INFORMATION

Exhibition

Marcel Duchamp in South-East Asia

Curated by Tony Godfrey

Venue

Equator Art Projects

47 Malan Road

#01-21 Gillman Barracks

Singapore 109444

Exhibition dates

15 September–21 October 2012

Opening reception

Friday, 14 September 2012

7pm till late

RSVP required (info@eqproj.com)

Admission

Free

Nearest MRT Station

Labrador Park

Gallery hours

Tuesday to Saturday: 11am–8pm

Sunday: 10am–6pm

Closed on Mondays and Public Holidays

Website

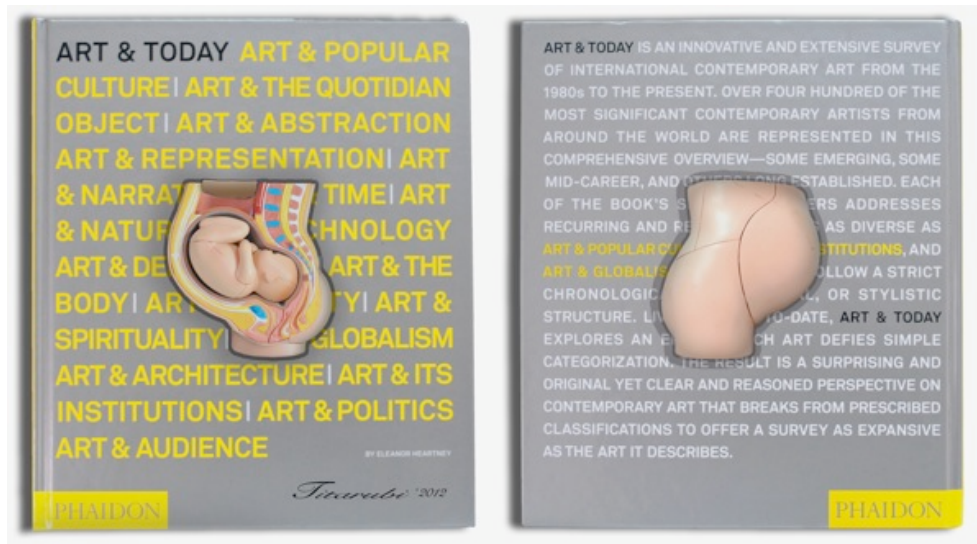
www.eqproj.com

For more information, please contact

theresia@eqproj.com

EQUATOR ARTPROJECTS

IMAGES



Titarubi, *Womb of Eros*, book & 3D human pregnancy pelvis model, 29.5 x 25.5 cm, 2012



Geraldine Javier, *The Gift*, Paete woodcarving and ceramic urinal ashtray from Ireland, 2012



S. Teddy D, 8, aluminum and fiber, 80 x 35 x 12 cm, 2012



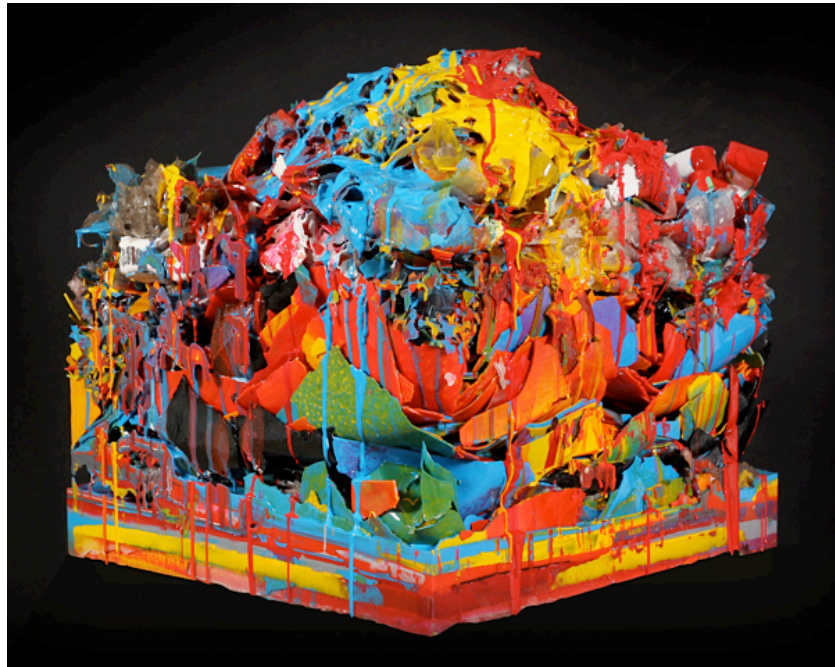
Amanda Heng, *Singirl Revisits Postcards*, set of 8 postcards with a designed holder,
Postcards 14.6 x 9.6 cm, holders 22.2 x 25.7 cm, 2012



Indieguerillas, *This Hegemony Life*, digital print on canvas, dimensions variable, 2012



Lyle Buencamino, *Death of the Last Romantic*, bread, oil paint, white plate
and butter knife, 2012



Arin Dwihartanto, *Scrap #3*, resin on acrylic pedestal, 50 x 50 cm, 2012



Uji Handoko Eko Saputro, *As Easy as Adding the Values*, optic frame and polyester resin,
14 x 13 x 5 cm, 2012